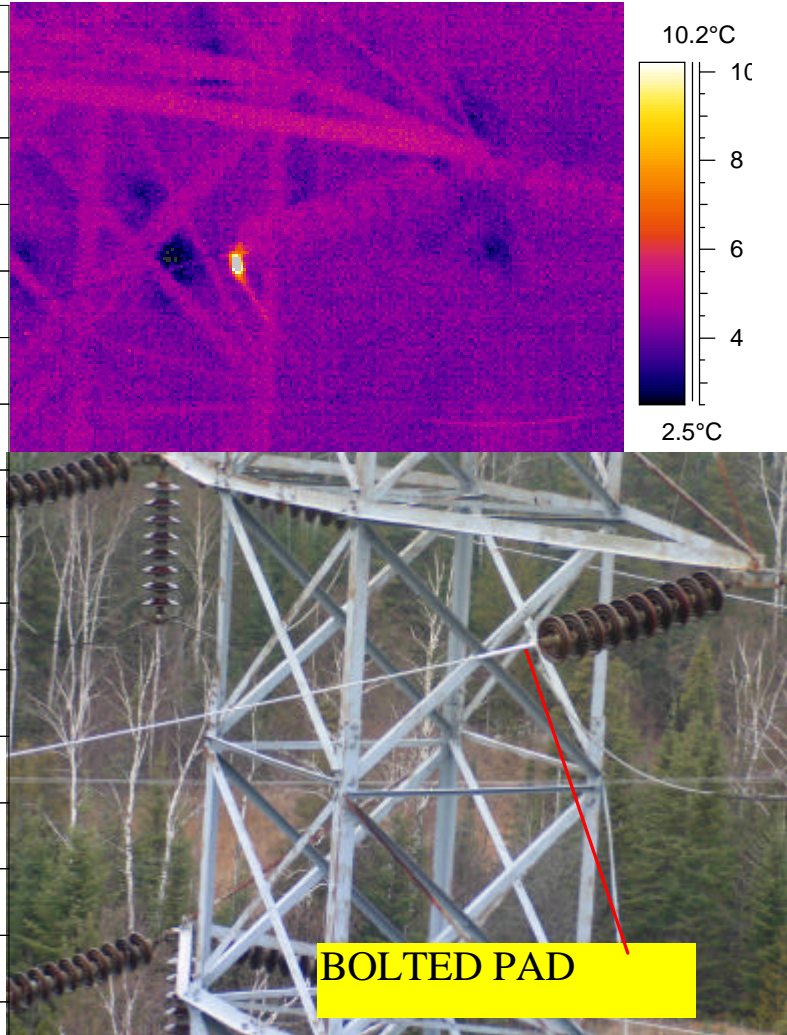


Thermovision Survey - Fault Report

HERRIDAGE LK. DS. X CRYSTAL FALL GS

Date	NOV. 21/04
District	NORTHEAST
Circuit	D2L / EAST
Latitude	
Longitude	
Str / Span	TWR. # 175
Phase	MIDDLE
Location	FAR
Component	BOLTED PAD
Fault Temp>Ref	8.9 C
Reference	5.2 C
Cct. Amps	100 AMPS
Cct Rating	60.0 C
Thermographer	S.GREEN-19206
HO 1710 R3	C- RATED



THE REFERENCE TEMP. WAS TAKEN AT A LOCATION ON THE CIRCUIT NOT EFFECTED BY THE HOT COMPONENT.

717-337-1527